



# **SITE SECURITY SOLUTIONS**

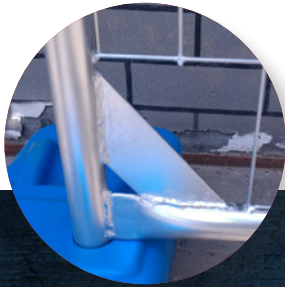
- | SITE SECURITY FENCING
- | VEHICLE ACCESS GATES
- | PEDESTRIAN GATES
- | PEDESTRIAN BARRIERS
- | SITE ACCESS CONTROL GATES



## GALVANISED FENCE PANELS

Code: TF-242132

- 2.1m H x 2.4m W panels
- Frame: 32mm overall diameter & 2mm wall thickness
- Pre-galvanised pipe 42 microns Av.
- Mesh fill: 4mm horizontal, 4mm vertical 120mm x 55mm spacing
- Weight: 17kg



## FENCE FOOT

Code: TF-FOOT32



## FENCE BRACE

Code: TF-BRACE32



## COUPLING JOINER

Code: TF-CLAMP32



## HINGE COUPLER

Code: TF-HINGE32



## GATE WHEEL POST

Code: TF-GAW





## | PEDESTRIAN PANELS

Code: 6101-PG

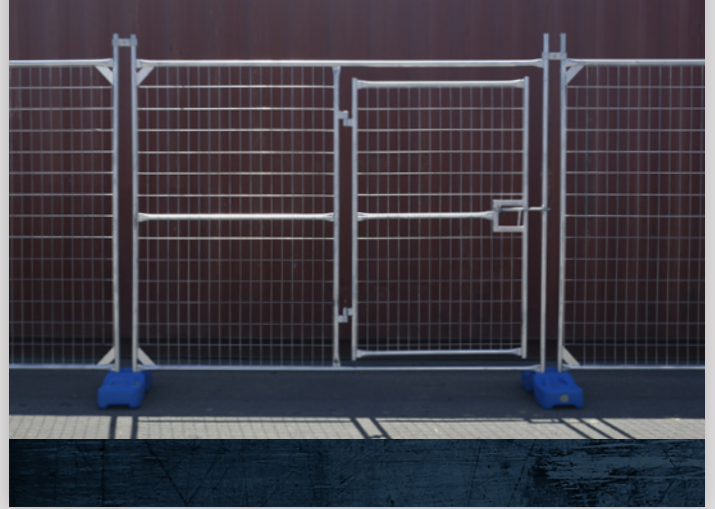
- Supplied with wheels
- 1.2m gate width



## | PEDESTRIAN GATES

Code: 6101-PAG

- Built-in style, no need for wheels, good for rough terrain
- 1.2m gate width



## | VEHICLE ACCESS PANELS

Code: 6101-VAG

- Supplied with wheels
- Can be locked with chain or padlock to keep site secure
- 4.8m vehicle access width





## CROWD CONTROL BARRIERS

Code: 6101-CCBO2212

- 1200 H x 2200 L mm, 25mm diamond mesh
- Supplied with 2 x Steel feet



## CONSTRUCTION BARRIERS

Code for Orange: 03-1000 ORANGE

Code for Galv: 03-1000 GALV

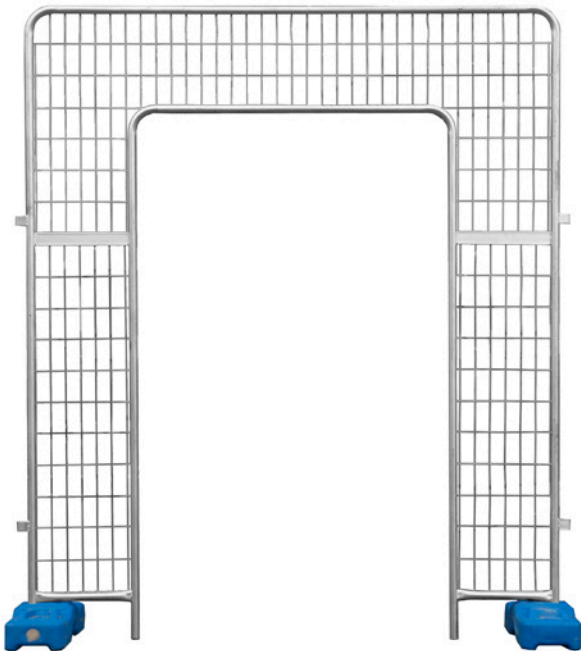
- 1200 H x 2200 L mm
- Available in painted orange or galvanised finish



## SITE ACCESS POINT

Code: 6101-SAP1

- 2.5 H x 2.3 W m
- 1.2m wide egress
- Galvanised finish
- 32mm diameter tube



## SITE ACCESS POINT WITH GATE

Code: 6101-SAP2

- 1.2 H x 3.2 W m
- Galvanised finish
- 25mm diameter tube
- Interlocks with Construction Barriers

