



**POWERPAC**

# LIGHTING SOLUTIONS

- | CHAIN LIGHTS
- | UPLIGHTS
- | FLOODLIGHTS
- | LEAD HOOKS/STANDS
- | BATTERY POWERED LIGHTING
- | BACKUP LIGHTING



## 30m CHAIN LIGHT (10 LAMPS)

Code: 6180-SL1030

- IP65
- Caged string lighting
- 3 pin male plug



## LED REPLACEMENT BULBS

Code: 6180-LEDB10W

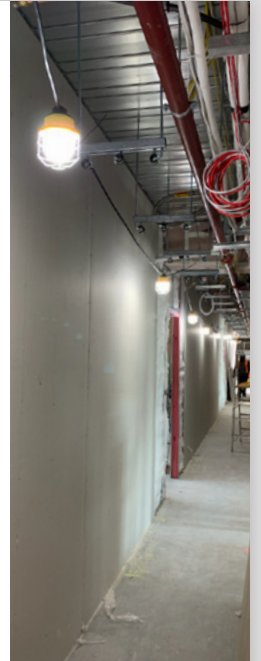
- 10W
- Up to 15,000 hours



## 30m CHAIN LIGHT

Code: 6180-CL25LED

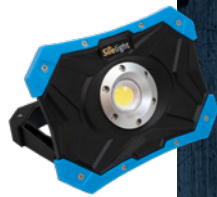
- IP65
- Steel cages
- 31.3m overall length
- 10 x 60W LED lamps spaced 3m apart
- 16A caravan style plugs for daisy chaining
- Can link up to 14 light sets



## LED MAGNETIC 20W

Code: K1113

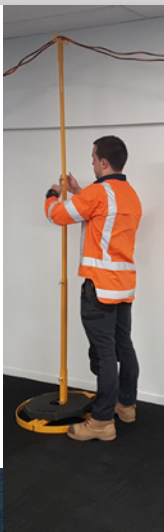
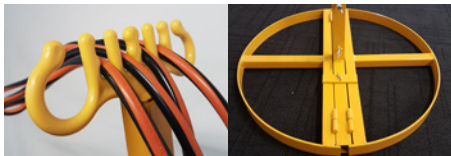
- IP44
- Light output: 800/1600 lumens
- Charge time: 4 hours



## FREE STANDING LEAD STAND

Code: 618-LEADSTAND

- Height 1.3-2.5m
- Capacity 10 leads/6 hoses up to 30mm diameter
- Solid construction with foldable base



## LEAD STAND WEIGHTS

Code: 16-TBASE6

- Portable and compact weight ideal for lead tower
- 8kg



## 20PK LEAD HOOKS

Code: 6181-LH20R

- Holds up to 8 leads each
- Can hold cables up to 50mm



## LED SITE FLOOD LIGHTS

- 3m cable and plug fitted
- IP65 Rated
- Ideal for exterior site lighting
- Fix to hoarding and cranes
- Yellow steel frame for self standing

CODE:	WATTAGE:
K1506H	100W
K1509H	200W



## DOUBLE 30W SUPER LED WORK LIGHT WITH TRIPOD

Code: K1189TW

- Wattage: 30W per lamp
- IP65 Waterproof
- Very minimal fire risk due to low heat output



## 40W LED UP LIGHT

Code: K1375L

- Wattage: 40W
- IP44
- Light output: 3200 lumens
- 240V
- Very minimal fire risk due to low heat output
- Single power take off to enable linking to further light



## 50W SMD LED RECHARGEABLE UPLIGHT

Code: K1118R

- Wattage: 50W
- IP44
- Battery: 11.1V, 8800mAh Li-ion
- Light output: 4000 lumens
- Work time: 3 hours
- Charge time: 4-5 hours
- Includes charger



## EMERGENCY BACKUP LED BATTERY LIGHT

Code: K6060B

- Comes with an emergency backup battery for power failure
- 240V
- IP65 Waterproof
- 16 AMP Plugs for daisy Chaining
- One hour of battery backup fitting available as part of the system
- LED automatically stays on after disconnection or loss of power for one hour before turning off
- 5m Cable
- Includes brackets for mounting/hanging

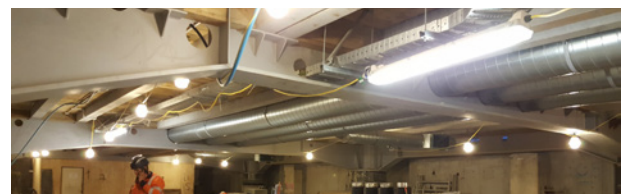


CODE:	SIZE:	WATTAGE:	BRIGHTNESS:	WEIGHT:
K6060B	676MM	25W	2200LM	3.5KG

## 1200mm PORTABLE LED LIGHT

Code: K6061

- 220V-240V
- IP65 Waterproof
- 16 AMP Plugs for daisy Chaining
- 5m Cable
- Includes brackets for mounting/hanging



CODE:	SIZE:	WATTAGE:	BRIGHTNESS:	WEIGHT:
K6061	1200mm	45W	4500lm	4.5kg



# **| SOLAR LED STREET LIGHT 200W**

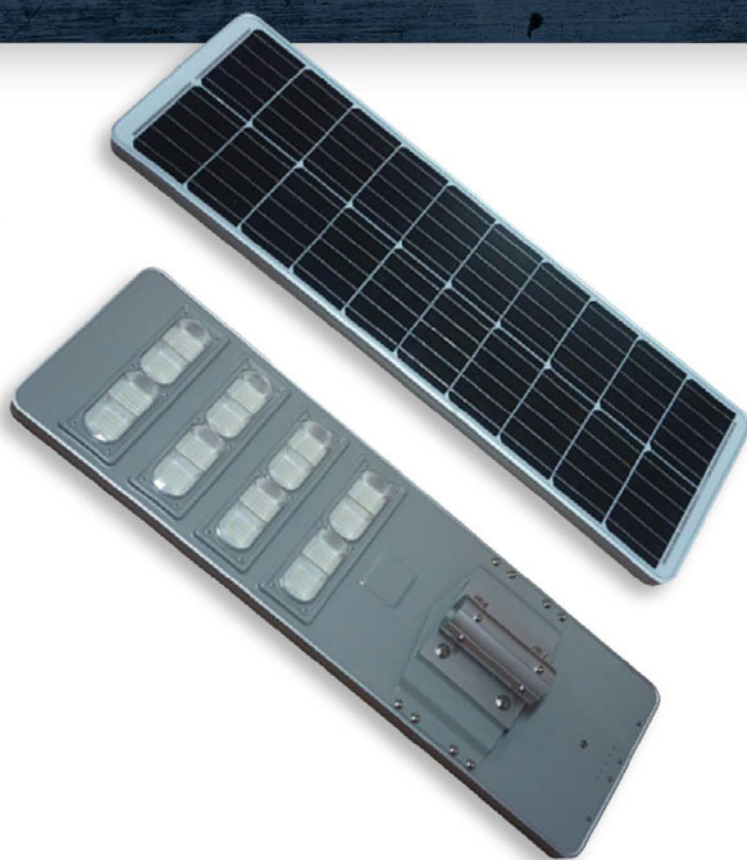
No Limits with Weather

## **CHARGES IN ANY CONDITIONS**

Rain, cloud, no problem!

### **SPECIFICATIONS**

- 18000 Lumen
- Solar Power: 10V, 88W (High Efficiency Monocrystalline Silicon)
- Charge Time: 72 Hours with Enough Sunlight
- Working Time: More than 30 Hours
- Battery Type: Lithium Battery 6.4V 35Ah
- Beam Angle: 120°
- Recommended Installation Height: 6-8m
- Material: Aluminium Alloy + PET
- Product Size: 1150 x 350 x 160mm
- Product Weight: 10.33kg
- IP65



Code: K1593